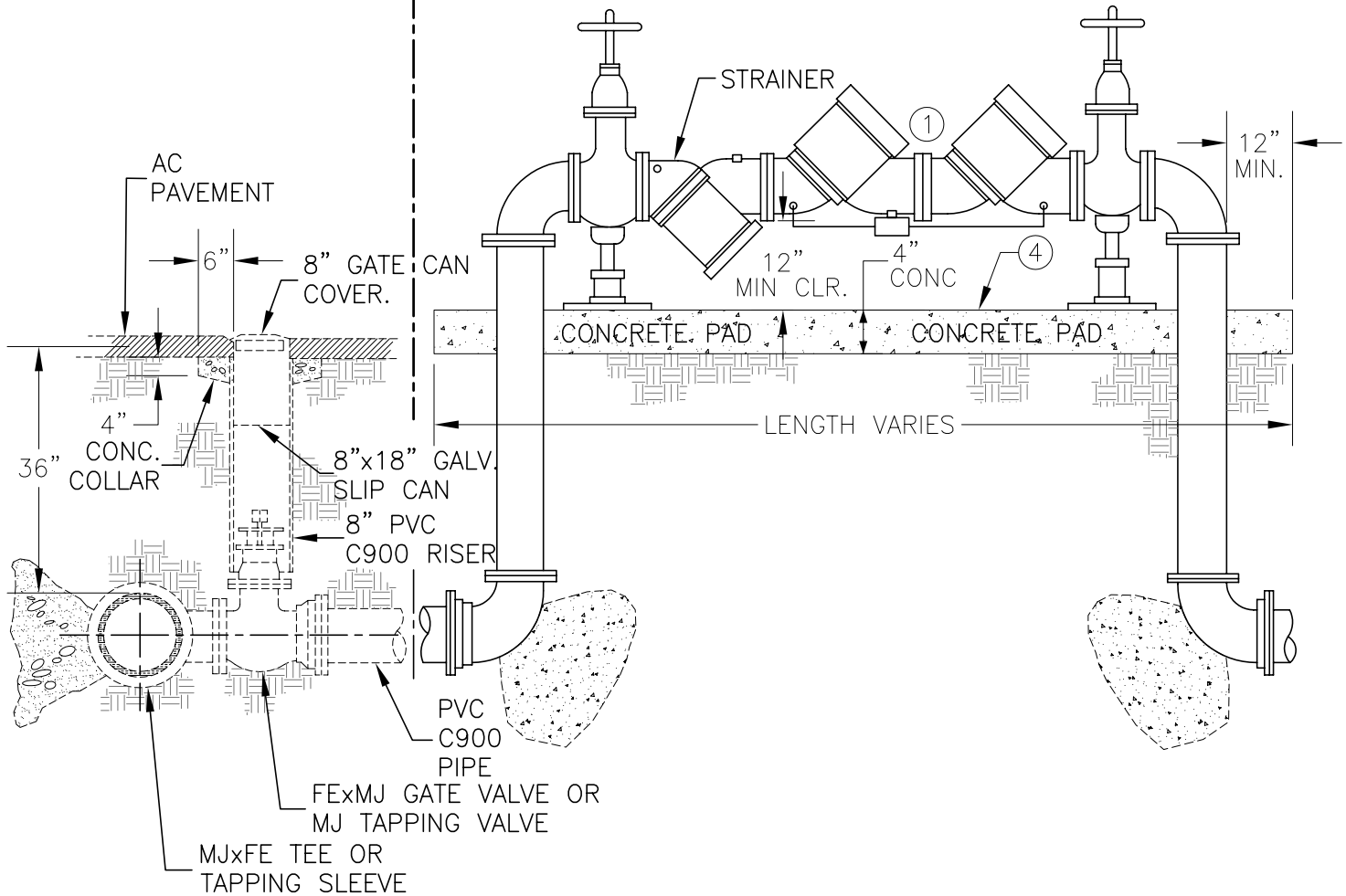


N:\AUTOCAD FILES\AUTOCAD MASTER DWGS\WORKING DWGS\Standard SPEC DWGS\Std-Dwg FOWD\DWGS\Std-12-DetectorCheck.dwg, 01/12/10 02:19:57pm, teggar

**CONTRACTOR NOTE:**

INSTALLATION OF AN INSULATED PROTECTIVE COVER IS RECOMMENDED IN AREAS SUBJECT TO FREEZING.

PL  
 OWNED BY F.O.W.D. | OWNED BY DEVELOPER.



**NOTE:**

- ①. THE BACKFLOW DEVICES ALLOWED WITHIN FOWD SHALL BE APPROVED BY FOUNDATION FOR CROSS-CONNECTION CONTROL AND HYDRAULIC RESEARCH OF THE UNIVERSITY OF SOUTHERN CALIFORNIA (USC) AND SHALL BE IN THE MOST RECENT LIST OF APPROVED ASSEMBLIES.
2. THE SIZE AND TYPE OF THE REDUCED PRESSURE PRINCIPLE DETECTOR CHECK ASSEMBLY BACKFLOW DEVICE (RPPDCA) SHALL BE APPROVED BY FAIR OAKS WATER DISTRICT AND SHALL BE NOTED ON THE CONSTRUCTION PLANS.
3. THE BACKFLOW ASSEMBLY SHALL BE INSTALLED AS CLOSE AS PRACTICAL TO THE METER BOX. NO TEES OR OTHER TYPE FITTINGS ARE ALLOWED BETWEEN METER BOX AND BACKFLOW DEVICE.
- ④. 4" CONCRETE PAD - 24" WIDE (MIN) WITH VARYING LENGTH, CONCRETE TO EXTEND 12" BEYOND PIPE RISERS (SEE ABOVE)
5. FAIR OAKS WATER DISTRICT RECOMMENDS INSTALLATION OF STRAINER UPSTREAM FROM THE BACKFLOW DEVICE. THE SIZE AND TYPE OF THE STRAINER SHALL BE PER MANUFACTURER SPECIFICATIONS.

**Fair Oaks Water District**

10317 FAIR OAKS BLVD, FAIR OAKS, CA 95628-7187  
 OFFICE (916) 967-5723, FAX (916) 967-0153  
 WEBSITE: WWW.FOWD.COM



**FAIR OAKS**  
 WATER DISTRICT

**REDUCED PRESSURE PRINCIPLE  
 DETECTOR CHECK ASSEMBLY  
 3" AND ABOVE**

Standard Drawing 12

APPROVED:  
 M. NISENBOYM  
 DRAWN BY  
 T. EGGAR  
 DRAWING  
 STD-12  
 REVISED  
 JAN-2010  
 SCALE  
 N/A

Standard Specifications